

Talbot Primary School (954)

2006 School Level Report

Please check the data in this report. If, after comparing it with your own records, you deem it to be incorrect or incomplete, follow the directions on the web page below:

- <http://www.sofweb.vic.edu.au/standards>, then click on '**Accountability and Improvement**', then click on '**School Performance Reports**'.
-
-

Contents

	Page No.
Confidentiality	3
'Like' School Group chart	4
Assessment of Reading Prep to Year 2	5-6
Teacher Assessments against the VELs/CSF	7-15
AIM Reading	16
AIM Number	17
Teacher Assessment of Student Progress (PSD students)	18-19
Enrolments	20
Student Absence	21
Parent Opinion	22
Staff Opinion	23
Staff Sick Leave	24
Teaching Staff Retention	25
Bank Balances	26

Confidentiality

When reporting on the school's performance to the school community, care must be taken to avoid the disclosure of information that can directly or indirectly identify an individual. This may be a particular issue when reporting on the achievement of specific cohorts of students or the opinions of staff where there are small numbers.

In situations where confidentiality cannot be assured, schools may wish to report on the mean result or provide a written comment on school, year level or cohort performance.

Where the School Level Report is provided to school council members as part of any annual reporting process, or used for discussion on a school's performance, such as in consultation with the school community in the school self-evaluation process, it is important to remind school community members of their duty to only use this information for the purpose it was provided, and that the material must be kept confidential.

It is important to note that information that identifies an individual or can be used with other readily available information to identify a person is now protected by the *Information Privacy Act 2000* (<http://www.education.vic.gov.au/about/deptpolicies/informationprivacy.htm>).

'Like' School Group

School no: 954

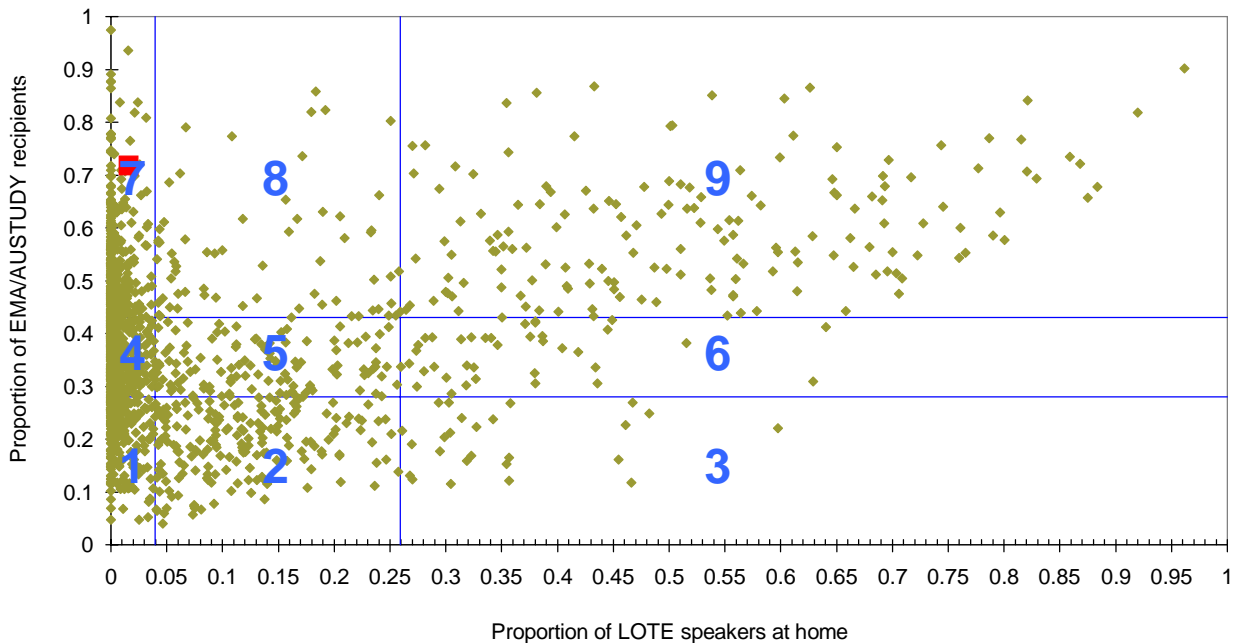
School name: Talbot Primary School

Explanation: The first chart below plots the Like School Group position of all government schools offering Prep - Year 10. The second chart plots the Like School Group position of all government schools providing VCE. This school is shown as the red square on the relevant chart/s.

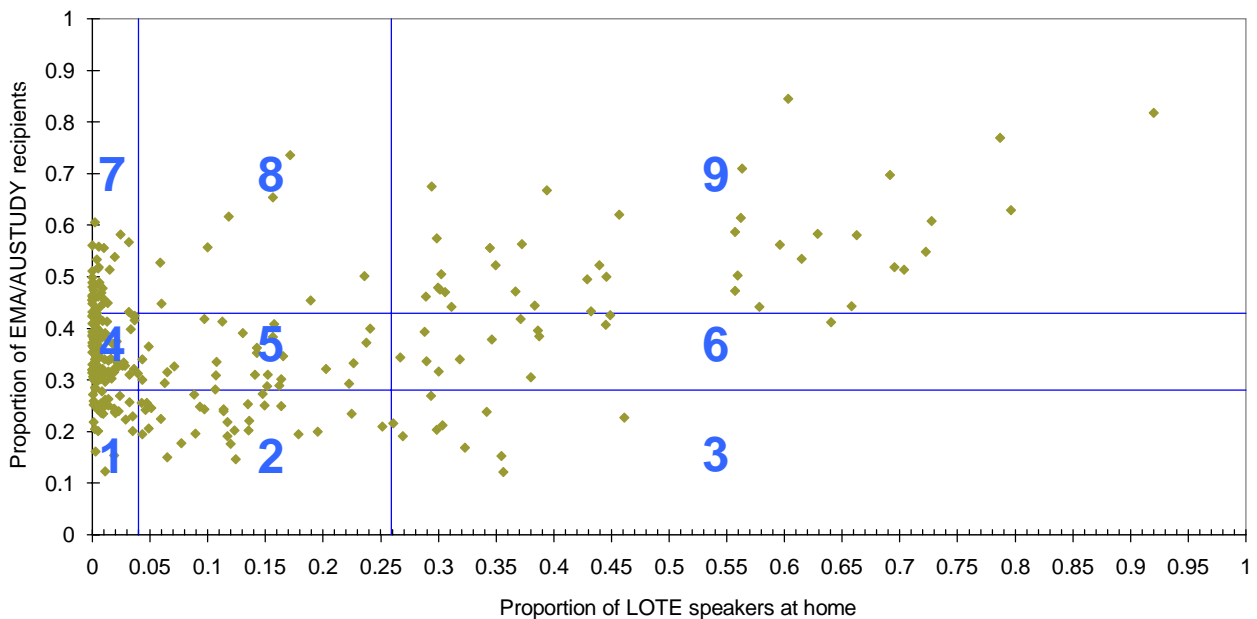
Note: EMA/AUSTUDY and LOTE proportions were not collected from 2004. 2003 proportions, and resulting LSGs, are therefore used from 2004.

	1999	2000	2001	2002	2003	2004	2005	2006
LSG:	7	7	7	7	7	7	7	7
EMA (3 year average):		0.724	0.713	0.721	0.718	0.718	0.718	0.718
LOTE (3 year average):		0.023	0.027	0.021	0.016	0.016	0.016	0.016

Like School Groups 2006, school plotted against Prep - Year 10 schools



Like School Groups 2006, school plotted against VCE providers



Assessment of Reading: Prep to Year 2

School no: 954

School name: Talbot Primary School

Explanation: Students' ability to read unsighted text is assessed at the end of each year. The data presented here includes 'deemed not capable' students.

More detailed information (including data where deemed not capable students are excluded) is available in the Assessment of Reading report, available from the School Performance Reports website.

Source of data: Data transmitted from school to DoE via an online web-form.

	Prep										Year 1										Year 2																
	School										LSG State		School										LSG State		School										LSG State		
	2002		2003		2004		2005		2006		2006	2006	2002		2003		2004		2005		2006		2006	2006	2002		2003		2004		2005		2006		2006	2006	
	(No.)	%	(No.)	%	(No.)	%	(No.)	%	(No.)	%	%	%	(No.)	%	(No.)	%	(No.)	%	(No.)	%	(No.)	%	%	%	(No.)	%	(No.)	%	(No.)	%	(No.)	%	%	%			
Level 1	100%	(7)	46.7	(12)	75.0	(6)	85.7	(4)	100.0	(9)	81.8	63.0	68.8	(11)	73.3	(9)	69.2	(14)	77.8	(7)	100.0	(5)	100.0	93.0	94.8												
	90-99%	(8)	53.3	(4)	25.0	(1)	14.3			(2)	18.2	29.3	25.3	(4)	26.7	(4)	30.8	(4)	22.2					6.1	4.6												
	80-89%											2.6	2.4											0.3	0.2												
	51-79%											2.1	1.6											0.2	0.1												
	50% or below											2.9	1.9											0.4	0.3												
	Total	(15)	100.0	(16)	100.0	(7)	100.0	(4)	100.0	(11)	100.0	100.0	100.0	(15)	100.0	(13)	100.0	(18)	100.0	(7)	100.0	(5)	100.0	100.0	100.0												
Subtotal 90-100%	(15)	100.0	(16)	100.0	(7)	100.0	(4)	100.0	(11)	100.0	92.3	94.1	(15)	100.0	(13)	100.0	(18)	100.0	(7)	100.0	(5)	100.0	99.1	99.4													
Level 5	100%	(2)	13.3	(5)	31.3	(3)	42.9	(3)	75.0	(9)	81.8	36.8	44.3	(6)	40.0	(8)	61.5	(13)	72.2	(6)	85.7	(5)	100.0	79.4	82.0	(6)	66.7	(15)	88.2	(14)	93.3	(10)	58.8	(9)	100.0	89.3	90.9
	90-99%	(11)	73.3	(7)	43.8	(3)	42.9			(1)	9.1	36.6	36.0	(9)	60.0	(5)	38.5	(5)	27.8	(1)	14.3			17.7	16.1	(2)	22.2	(2)	11.8	(1)	6.7	(7)	41.2	9.8	8.5		
	80-89%			(3)	18.8	(1)	14.3	(1)	25.0			6.2	5.3											0.9	0.6									0.3	0.2		
	51-79%											5.4	4.0											0.6	0.3	(1)	11.1							0.1	0.1		
	50% or below	(2)	13.3	(1)	6.3					(1)	9.1	15.1	10.3											1.4	1.0									0.5	0.4		
	Total	(15)	100.0	(16)	100.0	(7)	100.0	(4)	100.0	(11)	100.0	100.0	100.0	(15)	100.0	(13)	100.0	(18)	100.0	(7)	100.0	(5)	100.0	100.0	100.0	(9)	100.0	(17)	100.0	(15)	100.0	(17)	100.0	(9)	100.0	100.0	100.0
Subtotal 90-100%	(13)	86.7	(12)	75.0	(6)	85.7	(3)	75.0	(10)	90.9	73.3	80.3	(15)	100.0	(13)	100.0	(18)	100.0	(7)	100.0	(5)	100.0	97.0	98.1	(8)	88.9	(17)	100.0	(15)	100.0	(17)	100.0	(9)	100.0	99.1	99.3	
Level 15	100%																(1)	5.6	(4)	57.1	(4)	80.0	31.5	37.5	(3)	33.3	(2)	11.8	(2)	13.3	(4)	23.5	(7)	77.8	56.8	63.2	
	90-99%													(7)	46.7	(9)	69.2	(11)	61.1	(3)	42.9	(1)	20.0	48.8	49.4	(3)	33.3	(14)	82.4	(12)	80.0	(11)	64.7	(2)	22.2	37.6	33.2
	80-89%													(4)	26.7	(1)	7.7	(1)	5.6					8.8	6.2	(1)	11.1	(1)	5.9	(1)	6.7	(2)	11.8	2.7	1.7		
	51-79%													(4)	26.7	(3)	23.1	(5)	27.8					4.4	3.0	(1)	11.1							0.8	0.7		
	50% or below																							6.5	3.9	(1)	11.1							2.0	1.3		
	Total														(15)	100.0	(13)	100.0	(18)	100.0	(7)	100.0	(5)	100.0	100.0	100.0	(9)	100.0	(17)	100.0	(15)	100.0	(17)	100.0	(9)	100.0	100.0
Subtotal 90-100%														(7)	46.7	(9)	69.2	(12)	66.7	(7)	100.0	(5)	100.0	80.3	86.9	(6)	66.7	(16)	94.1	(14)	93.3	(15)	88.2	(9)	100.0	94.4	96.3
Level 20	100%																									(2)	22.2	(2)	11.8	(3)	20.0	(1)	5.9	(4)	44.4	40.9	47.4
	90-99%																									(3)	33.3	(12)	70.6	(10)	66.7	(13)	76.5	(5)	55.6	51.2	47.4
	80-89%																									(2)	22.2	(3)	17.6	(2)	13.3	(2)	11.8	3.4	2.4		
	51-79%																																	1.3	0.8		
	50% or below																									(2)	22.2							3.2	1.9		
	Total														(9)	100.0	(17)	100.0	(15)	100.0	(17)	100.0	(9)	100.0	100.0	100.0	(9)	100.0	(17)	100.0	(15)	100.0	(17)	100.0	(9)	100.0	100.0
Subtotal 90-100%														(5)	55.6	(14)	82.4	(13)	86.7	(14)	82.4	(9)	100.0	92.0	94.9	(5)	55.6	(14)	82.4	(13)	86.7	(14)	82.4	(9)	100.0	92.0	94.9

	2002	2003	2004	2005	2006
No. of students DNC ¹ :	0	0	0	0	0
No. of students at risk ² :	0	0	0	0	0

	2002	2003	2004	2005	2006
	0	0	0	0	0
	0	0	0	0	0

	2002	2003	2004	2005	2006
	1	0	0	0	0
	3	1	1	2	0

Notes:

¹ Students can be DNC (deemed not capable) only if they meet one of the conditions (insufficient English, receiving D&I funding, insufficient attendance at the school or referred from Reading Recovery) AND read below the minimum standard.

² The number of students at risk is the number of students reading at less than 90% accuracy at Level 1 for Prep, Level 5 for Year 1 or Level 15 for Year 2.

Assessment of Reading: Prep to Year 2

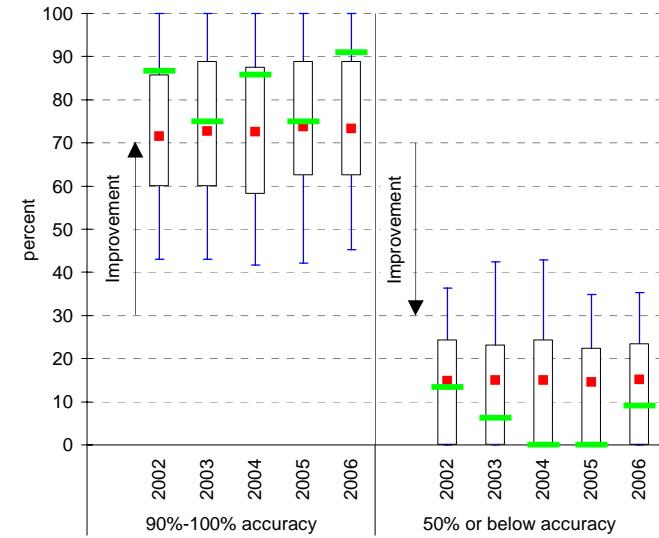
School no: 954

School name: Talbot Primary School

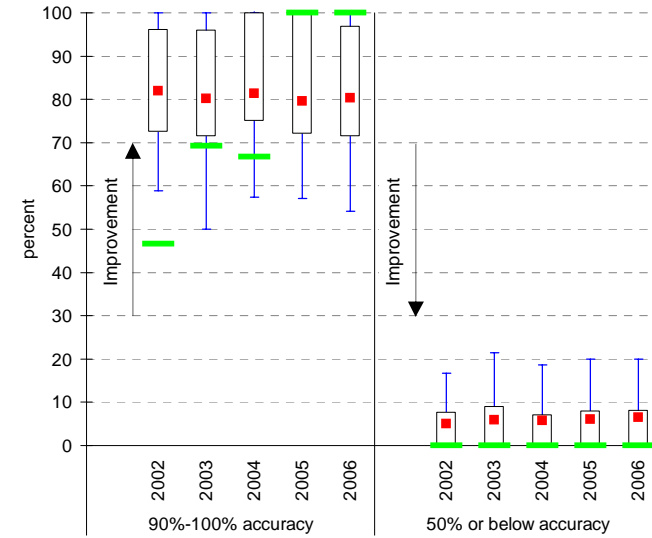
Explanation: Students' ability to read unsighted text is assessed at the end of each year.

Source of data: Data transmitted from school to DoE via an online web-form.

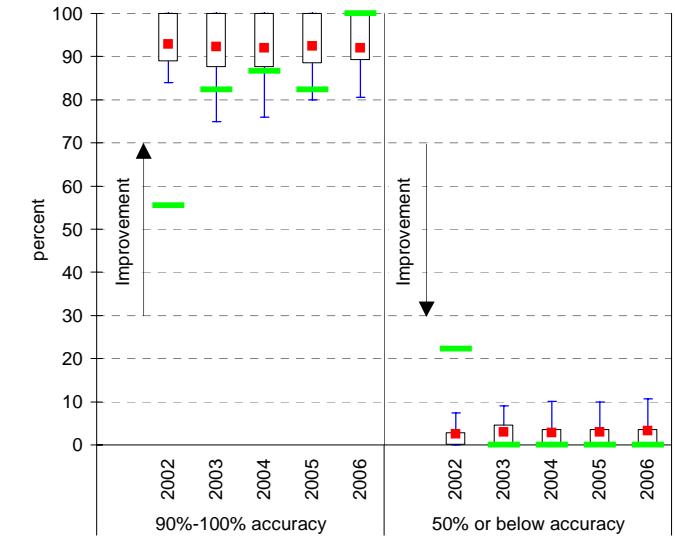
Year level: Prep
Text level: Level 5



Year level: Year 1
Text level: Level 15



Year level: Year 2
Text level: Level 20



Legend:

- LSG 90th percentile
- LSG 75th percentile
- LSG Mean
- LSG 25th percentile
- School
- LSG 10th percentile

LSG History

2002	7
2003	7
2004	7
2005	7
2006	7

Teacher Assessments against the VELS - Year levels Prep-6 combined

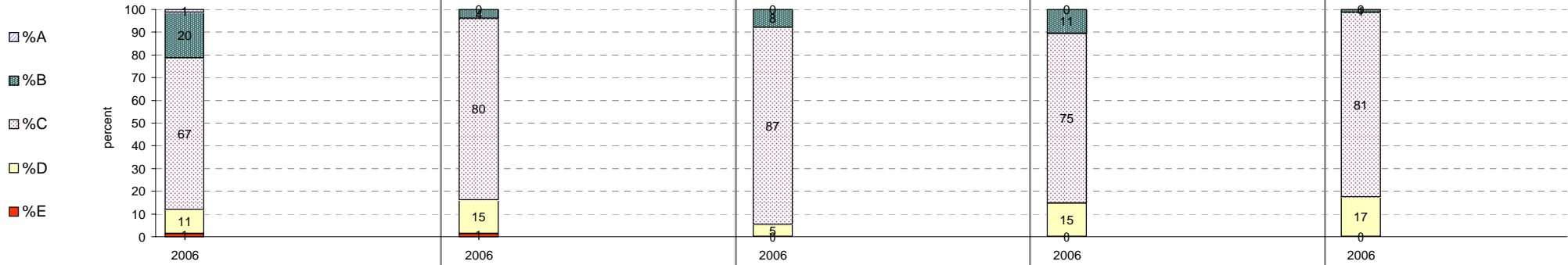
School no: 954

School name: Talbot Primary School

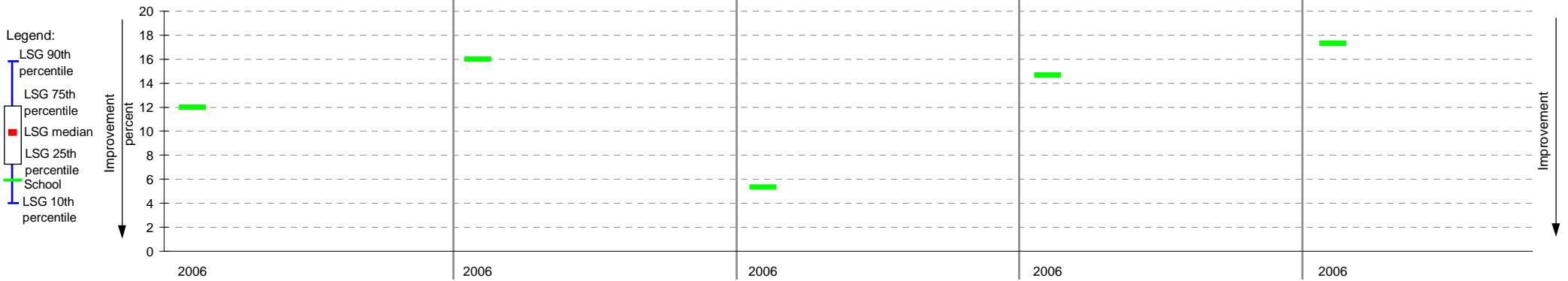
Source of data: Data retrieved electronically from CASES21 at time of rollover.

Explanation: Teacher assessments of student progress against the VELS.

	Reading						Writing						Speaking & Listening						Number						Measurement, Chance & Data*						
	total students	% A	% B	% C	% D	% E	total students	% A	% B	% C	% D	% E	total students	% A	% B	% C	% D	% E	total students	% A	% B	% C	% D	% E	total students	% A	% B	% C	% D	% E	
Year Levels: Prep-6 (combined)	2006	75	1	20	67	11	1	75	0	4	80	15	1	75	0	8	87	5	0	75	0	11	75	15	0	75	0	1	81	17	0



Percentage achieving D or E, compared to LSG benchmarks**



Notes:

* pre-2006, the corresponding CSF strand for VELS Measurement, Chance and Data was Measurement.

** 2006 benchmarks will not be available until June 2007.

Teacher Assessments against the VELS - English (primary)

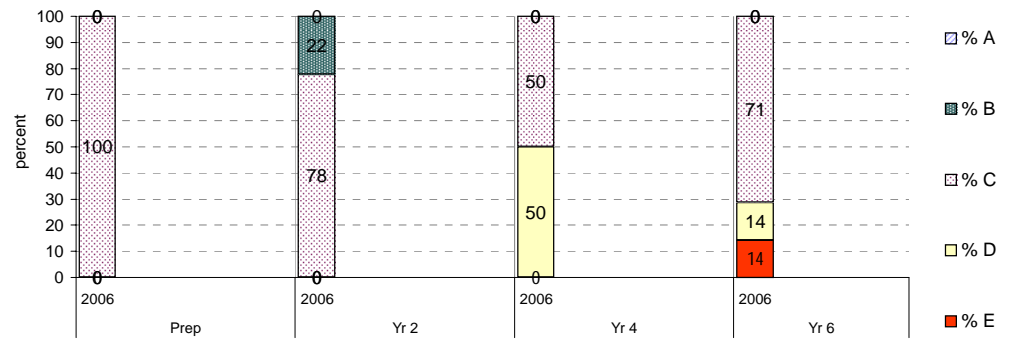
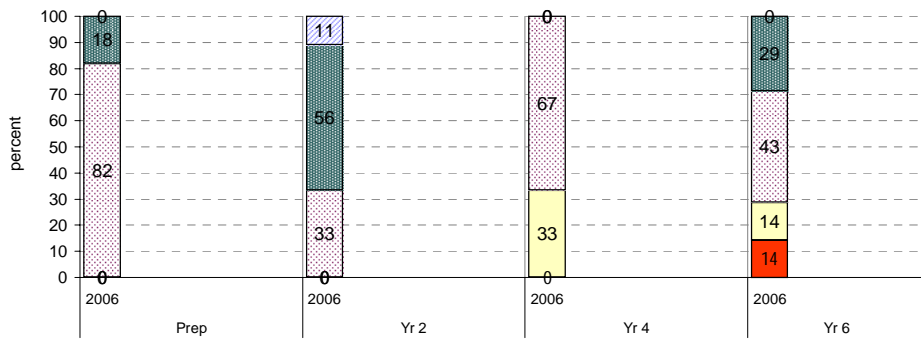
School no: 954
School name: Talbot Primary School
Source of data: Data retrieved electronically from CASES21 at time of rollover.
Explanation: Teacher assessments of student progress against the VELS.

Reading

		total students	% A	% B	% C	% D	% E	mean	Benchmarks* (means)	
									LSG	State
Prep	2006	11	0	18	82	0	0	1.00		
Yr 2	2006	9	11	56	33	0	0	2.25		
Yr 4	2006	12	0	0	67	33	0	2.67		
Yr 6	2006	7	0	29	43	14	14	3.82		

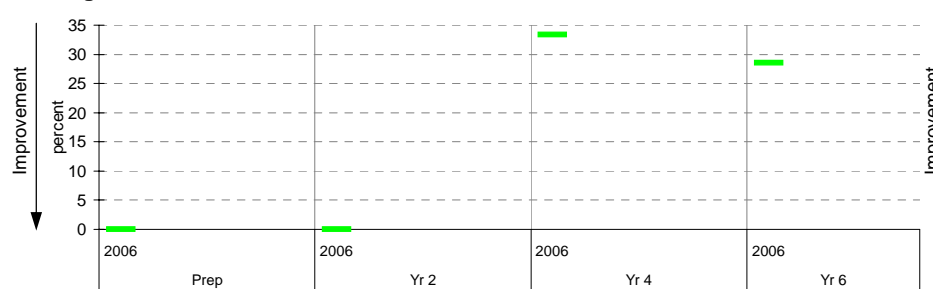
Writing

		total students	% A	% B	% C	% D	% E	mean	Benchmarks* (means)	
									LSG	State
Prep	2006	11	0	0	100	0	0	0.95		
Yr 2	2006	9	0	22	78	0	0	2.00		
Yr 4	2006	12	0	0	50	50	0	2.58		
Yr 6	2006	7	0	0	71	14	14	3.79		

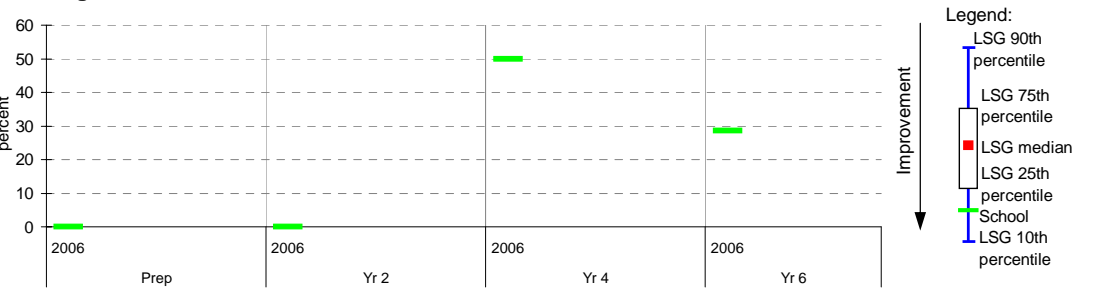


Percentage achieving D or E, compared to LSG benchmarks*

Reading



Writing



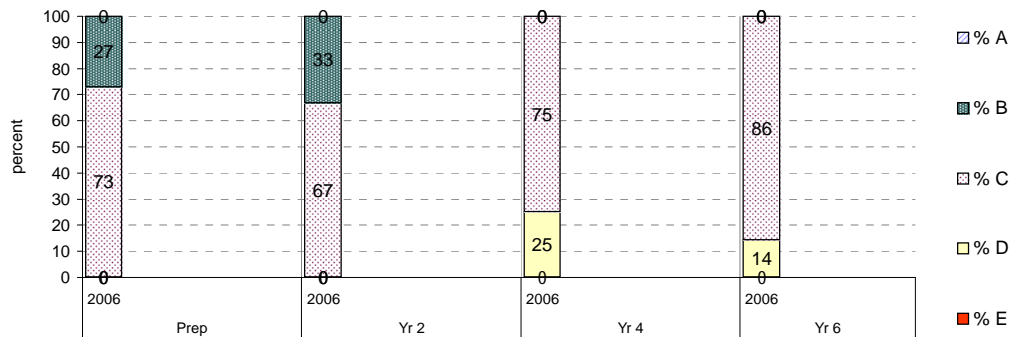
* Note: 2006 benchmarks will not be available until June 2007.

Teacher Assessments against the VELS - English (primary)

School no: 954
School name: Talbot Primary School
Source of data: Data retrieved electronically from CASES21 at time of rollover.
Explanation: Teacher assessments of student progress against the VELS.

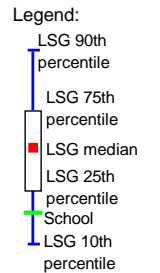
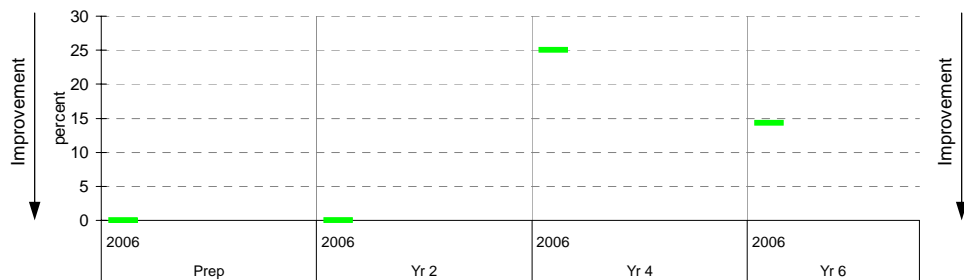
Speaking and Listening

		total students	% A	% B	% C	% D	% E	mean	Benchmarks* (means)	
									LSG	State
Prep	2006	11	0	27	73	0	0	1.07		
Yr 2	2006	9	0	33	67	0	0	2.08		
Yr 4	2006	12	0	0	75	25	0	2.79		
Yr 6	2006	7	0	0	86	14	0	3.89		



Percentage achieving D or E, compared to LSG benchmarks*

Speaking and Listening



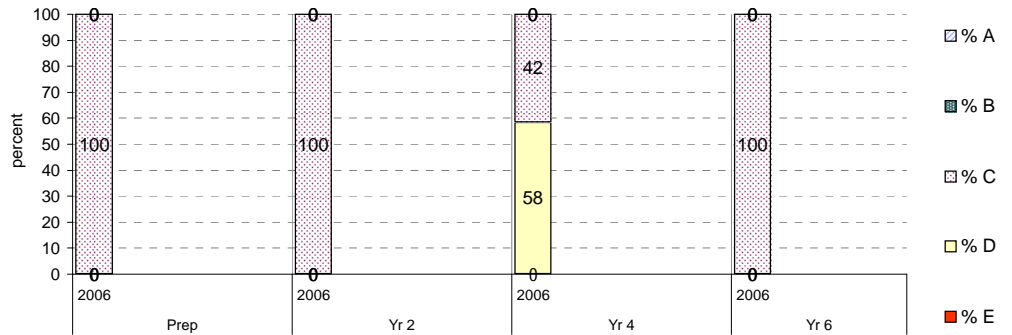
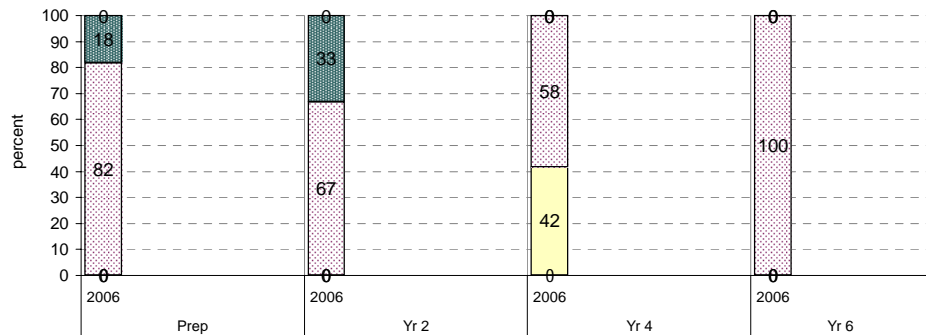
* Note: 2006 benchmarks will not be available until June 2007.

Teacher Assessments against the VELS - Mathematics (primary)

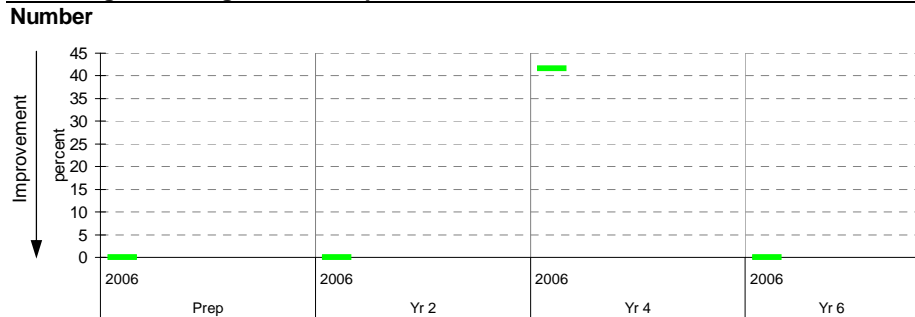
School no: 954
School name: Talbot Primary School
Source of data: Data retrieved electronically from CASES21 at time of rollover.
Explanation: Teacher assessments of student progress against the VELS.

Number		total students	% A	% B	% C	% D	% E	mean	Benchmarks* (means)	
									LSG	State
Prep	2006	11	0	18	82	0	0	1.00		
Yr 2	2006	9	0	33	67	0	0	2.08		
Yr 4	2006	12	0	0	58	42	0	2.69		
Yr 6	2006	7	0	0	100	0	0	3.89		

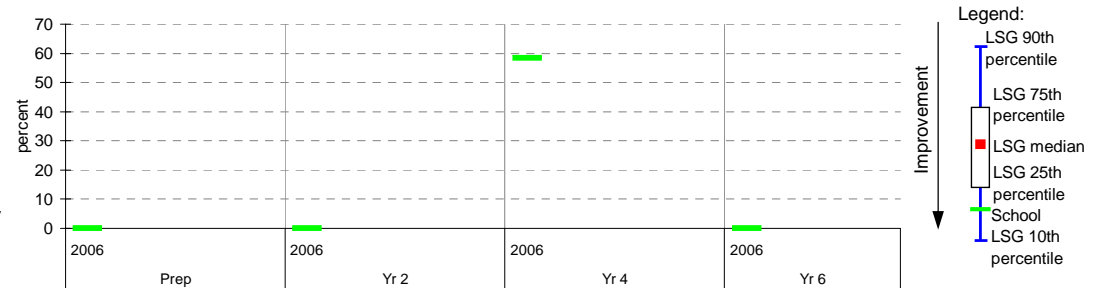
Measurement, Chance and Data (pre-2006, the corresponding CSF strand was Measurement)										
Number		total students	% A	% B	% C	% D	% E	mean	Benchmarks* (means)	
									LSG	State
Prep	2006	11	0	0	100	0	0	0.95		
Yr 2	2006	9	0	0	100	0	0	2.00		
Yr 4	2006	12	0	0	42	58	0	2.60		
Yr 6	2006	7	0	0	100	0	0	3.89		



Percentage achieving D or E, compared to LSG benchmarks*



Measurement, Chance and Data (pre-2006, the corresponding CSF strand was Measurement)



* Note: 2006 benchmarks will not be available until June 2007.

Teacher Assessments against the VELS - English (primary)

School no: 954		LSG History
School name: Talbot Primary School		2003 7
Source of data: Data retrieved electronically from CASES21 at time of rollover.		2004 7
Explanation: Teacher assessments of student progress against the VELS.		2005 7
		2006 7

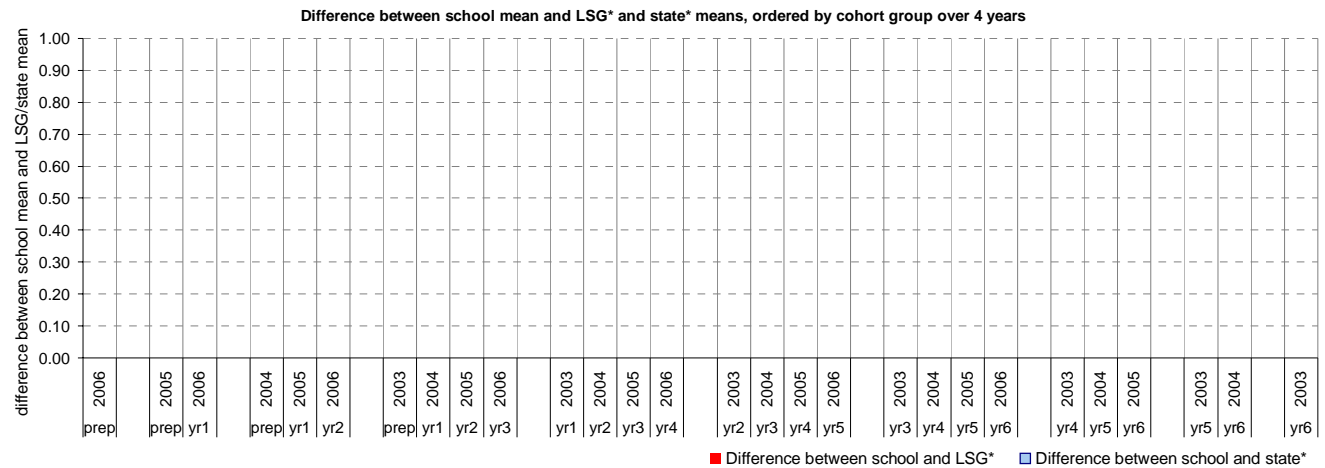
Reading

Year Level	Year	Total (1)	Assessed (2)	Level 1			Level 2			Level 3			Level 4			Level 5			Level 6			Level 6E			School mean	Benchmark* means		Diff. between school and ...	
				0.00	0.50	1.00	1.25	1.50	1.75	2.00	2.25	2.50	2.75	3.00	3.25	3.50	3.75	4.00	4.25	4.50	4.75	5.00	5.25	5.50		5.75	6.00	6.25	6.50
prep	2006	11	11	1	8	2																		1.00					
prep	2005																												
yr1	2006	5	5			5																			1.50				
prep	2004																												
yr1	2005																												
yr2	2006	9	9				3	4	1	1															2.25				
prep	2003																												
yr1	2004																												
yr2	2005																												
yr3	2006	16	16				3	5	8																2.33				
yr1	2003																												
yr2	2004																												
yr3	2005																												
yr4	2006	12	12					3	1	5	3														2.67				
yr2	2003																												
yr3	2004																												
yr4	2005																												
yr5	2006	15	15									3	6	4	2										3.58				
yr3	2003																												
yr4	2004																												
yr5	2005																												
yr6	2006	7	7								1	1		3	2										3.82				
yr4	2003																												
yr5	2004																												
yr6	2005																												
yr5	2003																												
yr6	2004																												
yr6	2003																												

shading indicates a 'C' grade (at the expected standard) on the VELS scale.

- (1) Students in group
- (2) Total assessed

* Note: 2006 benchmarks will not be available until June 2007.



Teacher Assessments against the VELS - English (primary)

School no: 954		LSG History
School name: Talbot Primary School		2003 7
Source of data: Data retrieved electronically from CASES21 at time of rollover.		2004 7
Explanation: Teacher assessments of student progress against the VELS.		2005 7
		2006 7

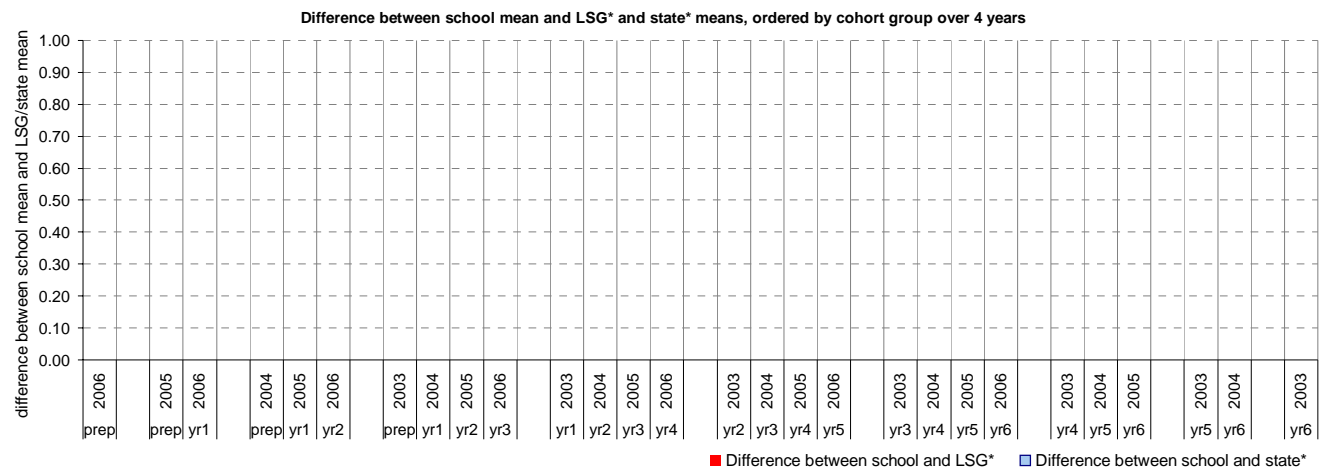
Writing

Year Level	Year	Total (1)	Assessed (2)	Level 1			Level 2			Level 3			Level 4			Level 5			Level 6			Level 6E			School mean	Benchmark* means		Diff. between school and ...	
				0.00	0.50	1.00	1.25	1.50	1.75	2.00	2.25	2.50	2.75	3.00	3.25	3.50	3.75	4.00	4.25	4.50	4.75	5.00	5.25	5.50		5.75	6.00	6.25	6.50
prep	2006	11	11	1	10																			0.95					
prep	2005																												
yr1	2006	5	5			2	3																		1.40				
prep	2004																												
yr1	2005																												
yr2	2006	9	9				2	5	2																2.00				
prep	2003																												
yr1	2004																												
yr2	2005																												
yr3	2006	16	16			1	3	9	3																2.22				
yr1	2003																												
yr2	2004																												
yr3	2005																												
yr4	2006	12	12					5	1	3	3														2.58				
yr2	2003																												
yr3	2004																												
yr4	2005																												
yr5	2006	15	15									3	11	1											3.47				
yr3	2003																												
yr4	2004																												
yr5	2005																												
yr6	2006	7	7							1		1		5											3.79				
yr4	2003																												
yr5	2004																												
yr6	2005																												
yr5	2003																												
yr6	2004																												
yr6	2003																												

shading indicates a 'C' grade (at the expected standard) on the VELS scale.

- (1) Students in group
- (2) Total assessed

* Note: 2006 benchmarks will not be available until June 2007.



Teacher Assessments against the VELS - English (primary)

School no: 954	LSG History
School name: Talbot Primary School	2003 7
Source of data: Data retrieved electronically from CASES21 at time of rollover.	2004 7
Explanation: Teacher assessments of student progress against the VELS.	2005 7
	2006 7

Speaking and Listening

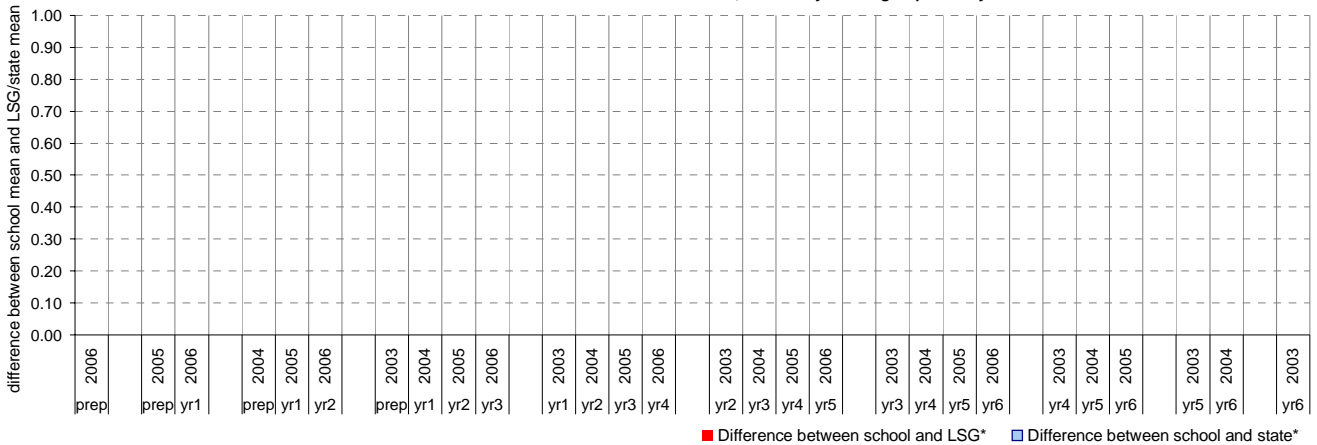
Year Level	Year	Total (1)	Assessed (2)	Level 1			Level 2			Level 3			Level 4			Level 5			Level 6			Level 6E			School mean	Benchmark* means		Diff. between school and ...	
				0.00	0.50	1.00	1.25	1.50	1.75	2.00	2.25	2.50	2.75	3.00	3.25	3.50	3.75	4.00	4.25	4.50	4.75	5.00	5.25	5.50		5.75	6.00	6.25	6.50
prep	2006	11	11	8			3																		1.07				
prep	2005																												
yr1	2006	5	5				5																		1.50				
prep	2004																												
yr1	2005																												
yr2	2006	9	9							6			3												2.08				
prep	2003																												
yr1	2004																												
yr2	2005																												
yr3	2006	16	16							10			6												2.34				
yr1	2003																												
yr2	2004																												
yr3	2005																												
yr4	2006	12	12							3			4			5									2.79				
yr2	2003																												
yr3	2004																												
yr4	2005																												
yr5	2006	15	15										3			12									3.45				
yr3	2003																												
yr4	2004																												
yr5	2005																												
yr6	2006	7	7										1			1			5						3.89				
yr4	2003																												
yr5	2004																												
yr6	2005																												
yr5	2003																												
yr6	2004																												
yr6	2003																												

shading indicates a 'C' grade (at the expected standard) on the VELS scale.

- (1) Students in group
- (2) Total assessed

* Note: 2006 benchmarks will not be available until June 2007.

Difference between school mean and LSG* and state* means, ordered by cohort group over 4 years



Teacher Assessments against the VELS - Mathematics (primary)

School no: 954	LSG History
School name: Talbot Primary School	2003 7
Source of data: Data retrieved electronically from CASES21 at time of rollover.	2004 7
Explanation: Teacher assessments of student progress against the VELS.	2005 7
	2006 7

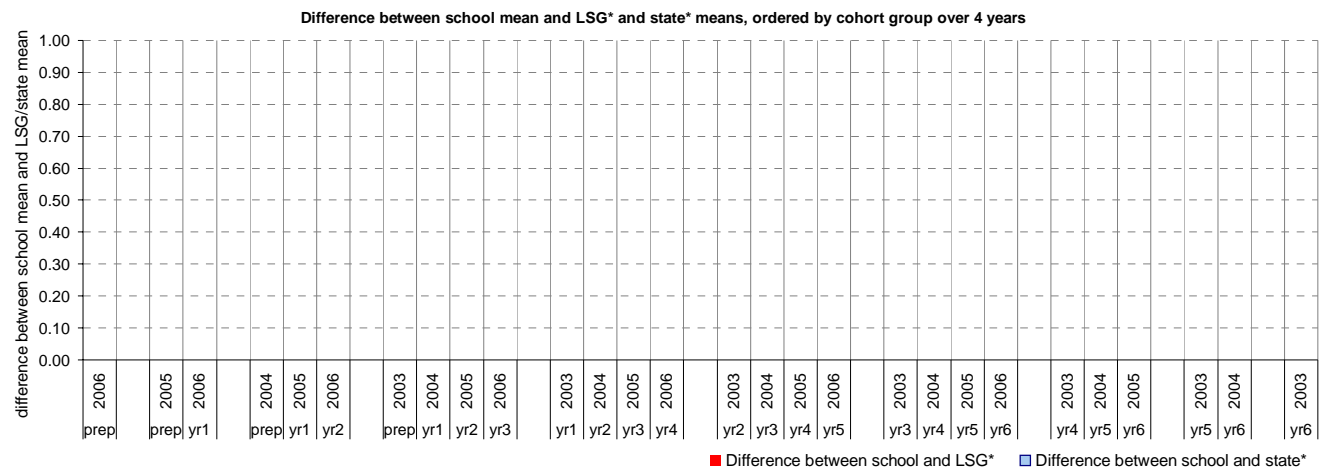
Number

Year Level	Year	Total (1)	Assessed (2)	Level 1			Level 2			Level 3			Level 4			Level 5			Level 6			Level 6E			School mean	Benchmark* means		Diff. between school and ...	
				0.00	0.50	1.00	1.25	1.50	1.75	2.00	2.25	2.50	2.75	3.00	3.25	3.50	3.75	4.00	4.25	4.50	4.75	5.00	5.25	5.50		5.75	6.00	6.25	6.50
prep	2006	11	11	1	8	2																		1.00					
prep	2005																												
yr1	2006	5	5		1	2	2																		1.65				
prep	2004																												
yr1	2005																												
yr2	2006	9	9				6	3																		2.08			
prep	2003																												
yr1	2004																												
yr2	2005																												
yr3	2006	16	16				6	7	3																	2.20			
yr1	2003																												
yr2	2004																												
yr3	2005																												
yr4	2006	12	12					2	3	3	4															2.69			
yr2	2003																												
yr3	2004																												
yr4	2005																												
yr5	2006	15	15									5	9	1													3.43		
yr3	2003																												
yr4	2004																												
yr5	2005																												
yr6	2006	7	7											3	4												3.89		
yr4	2003																												
yr5	2004																												
yr6	2005																												
yr5	2003																												
yr6	2004																												
yr6	2003																												

shading indicates a 'C' grade (at the expected standard) on the VELS scale.

- (1) Students in group
- (2) Total assessed

* Note: 2006 benchmarks will not be available until June 2007.



Teacher Assessments against the VELS - Mathematics (primary)

School no: 954		LSG History
School name: Talbot Primary School		2003 7
Source of data: Data retrieved electronically from CASES21 at time of rollover.		2004 7
Explanation: Teacher assessments of student progress against the VELS.		2005 7
		2006 7

Measurement, Chance and Data (pre-2006, the corresponding CSF strand was Measurement)

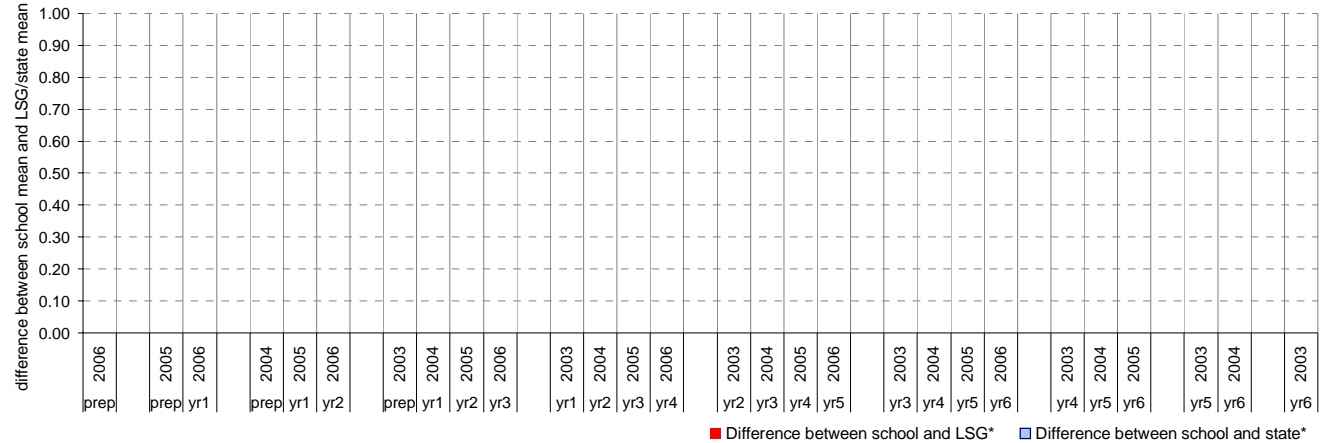
Year Level	Year	Total (1)	Assessed (2)	Level 1			Level 2			Level 3			Level 4			Level 5			Level 6			Level 6E			School mean	Benchmark* means		Diff. between school and ...				
				0.00	0.50	1.00	1.25	1.50	1.75	2.00	2.25	2.50	2.75	3.00	3.25	3.50	3.75	4.00	4.25	4.50	4.75	5.00	5.25	5.50		5.75	6.00	6.25	6.50	6.75	LSG	State
prep	2006	11	11	1	10																							0.95				
prep	2005																															
yr1	2006	5	5		1	4																										1.45
prep	2004																															
yr1	2005																															
yr2	2006	9	9				9																									2.00
prep	2003																															
yr1	2004																															
yr2	2005																															
yr3	2006	16	16				6	6	4																							2.22
yr1	2003																															
yr2	2004																															
yr3	2005																															
yr4	2006	12	12					2	5	3	2																					2.60
yr2	2003																															
yr3	2004																															
yr4	2005																															
yr5	2006	15	15									5	9	1																		3.43
yr3	2003																															
yr4	2004																															
yr5	2005																															
yr6	2006	7	7											3	4																	3.89
yr4	2003																															
yr5	2004																															
yr6	2005																															
yr5	2003																															
yr6	2004																															
yr6	2003																															

shading indicates a 'C' grade (at the expected standard) on the VELS scale.

- (1) Students in group
- (2) Total assessed

* Note: 2006 benchmarks will not be available until June 2007.

Difference between school mean and LSG* and state* means, ordered by cohort group over 4 years



AIM Year 3 & 5: Reading ¹

School no: 954

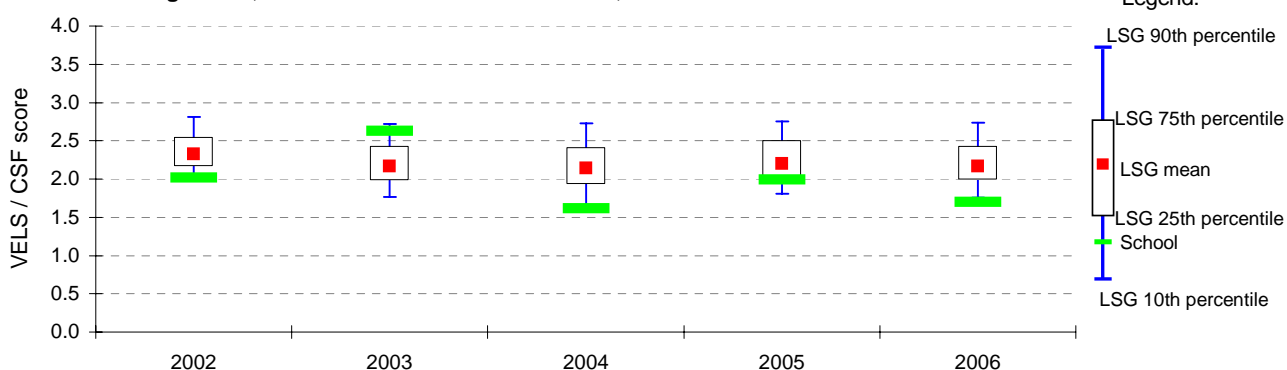
School name: Talbot Primary School

Explanation: The Achievement Improvement Monitor (AIM) is a statewide assessment program conducted each year for students in Years 3, 5, 7 and 9.

Source of data: Victorian Curriculum and Assessment Authority.

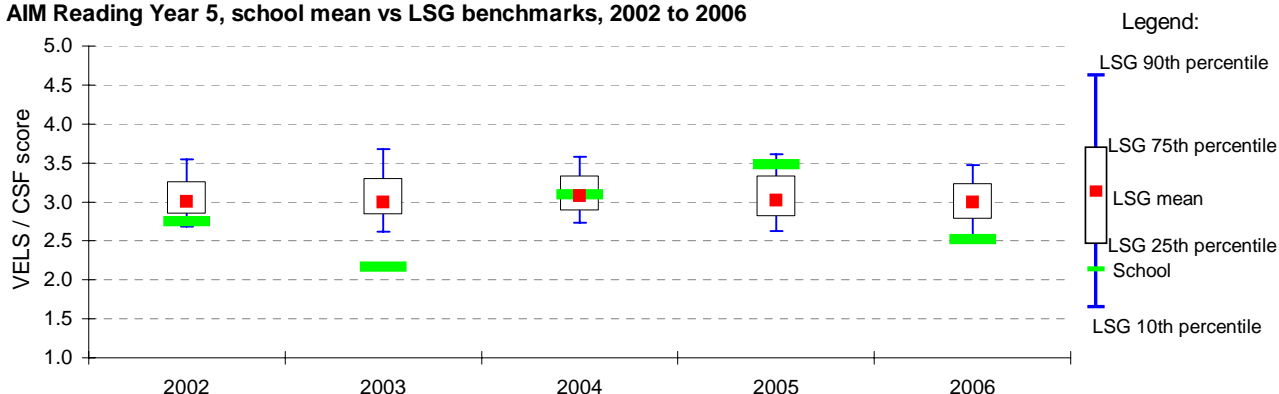
Year	School						LSG					State	
	student participation ² (%)	students participated (n)	VELS / CSF				10th ptile*	25th ptile*	75th ptile*	90th ptile*			
			Level 1 (n) (%)	Level 4/5 (n) (%)		mean							
2002	100	11	1	9	2	18	2.0	2.0	2.2	2.3	2.5	2.8	2.4
2003	90	9	4	29	4	44	2.6	1.8	2.0	2.2	2.4	2.7	2.3
2004	88	14	2	18	1	7	1.6	1.6	1.9	2.1	2.4	2.7	2.3
2005	79	11	5	36	1	7	2.0	1.8	2.0	2.2	2.5	2.8	2.4
2006	82	14					1.7	1.8	2.0	2.2	2.4	2.7	2.3

AIM Reading Year 3, school mean vs LSG benchmarks, 2002 to 2006



Year	School						LSG					State	
	student participation ² (%)	students participated (n)	VELS / CSF				10th ptile*	25th ptile*	75th ptile*	90th ptile*			
			Level 2 (n) (%)	Level 5/6 (n) (%)		mean							
2002	86	12	1	8	2	17	2.7	2.7	2.8	3.0	3.3	3.5	3.1
2003	100	10	4	40			2.2	2.6	2.8	3.0	3.3	3.7	3.2
2004	85	11	1	9	3	27	3.1	2.7	2.9	3.1	3.3	3.6	3.2
2005	70	7	2	29			3.5	2.6	2.8	3.0	3.3	3.6	3.2
2006	79	11	3	27			2.5	2.5	2.8	3.0	3.2	3.5	3.1

AIM Reading Year 5, school mean vs LSG benchmarks, 2002 to 2006



Year 3 / Year 5 matched cohort ³	Yr 5 students participated (n)	Students in matched cohort (n)	Matched cohort (%)	Average growth (VELS / CSF units)	
				Complete school	Matched cohort
Yr3 2002 / Yr5 2004	11	9	82%	1.1	0.8
Yr3 2003 / Yr5 2005	7	5	71%	0.9	1.3
Yr3 2004 / Yr5 2006	11	9	82%	0.9	0.9

Notes: * distribution of school means
mean score of students

¹ for more detailed AIM data, refer to your school's 2006 AIM Data Service website at <http://aimds.vcaa.vic.edu.au>.

² % student participation = (students who participated in AIM / Feb enrolments) * 100

³ students who participated in AIM at the same school in Years 3 and 5 are called the matched cohort

AIM Year 3 & 5: Number ¹

School no: 954

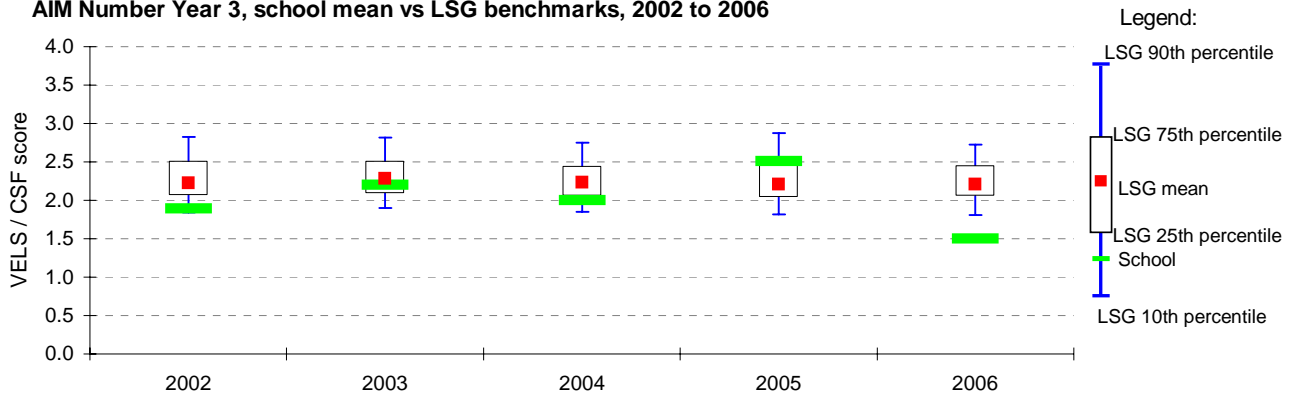
School name: Talbot Primary School

Explanation: The Achievement Improvement Monitor (AIM) is a statewide assessment program conducted each year for students in Years 3, 5, 7 and 9.

Source of data: Victorian Curriculum and Assessment Authority.

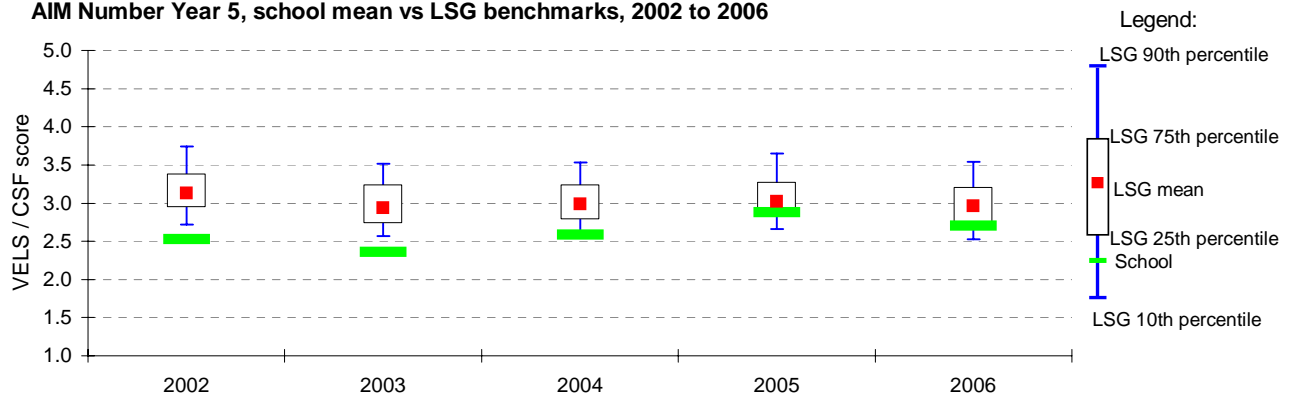
Year	School						LSG					State	
	student participation ² (%)	students participated (n)	VELS / CSF				10th ptile*	25th ptile*	75th ptile*	90th ptile*			
			Level 1 (n) (%)	Level 4/5 (n) (%)		mean							
2002	109	12	3	25	2	17	1.9	1.8	2.1	2.2	2.5	2.8	2.4
2003	90	9					2.2	1.9	2.1	2.3	2.5	2.8	2.4
2004	88	14	3	21			2.0	1.8	2.1	2.2	2.4	2.8	2.4
2005	64	9			2	22	2.5	1.8	2.0	2.2	2.5	2.9	2.4
2006	88	15	4	27			1.5	1.8	2.1	2.2	2.5	2.7	2.4

AIM Number Year 3, school mean vs LSG benchmarks, 2002 to 2006



Year	School						LSG					State	
	student participation ² (%)	students participated (n)	VELS / CSF				10th ptile*	25th ptile*	75th ptile*	90th ptile*			
			Level 2 (n) (%)	Level 5/6 (n) (%)		mean							
2002	93	13	3	23	1	8	2.5	2.7	2.9	3.1	3.4	3.7	3.3
2003	100	10	3	30			2.4	2.6	2.7	2.9	3.2	3.5	3.1
2004	85	11	1	9			2.6	2.6	2.8	3.0	3.2	3.5	3.2
2005	70	7					2.9	2.7	2.8	3.0	3.3	3.6	3.2
2006	100	14					2.7	2.5	2.7	3.0	3.2	3.5	3.2

AIM Number Year 5, school mean vs LSG benchmarks, 2002 to 2006



Year 3 / Year 5 matched cohort ³	Yr5 students participated (n)	Students in matched cohort (n)	Matched cohort (%)	Average growth (VELS / CSF units)	
				Complete school	Matched cohort
Yr3 2002 / Yr5 2004	11	10	91%	0.7	0.6
Yr3 2003 / Yr5 2005	7	5	71%	0.7	0.8
Yr3 2004 / Yr5 2006	14	10	71%	0.7	0.8

Notes: * distribution of school means

mean score of students

¹ for more detailed AIM data, refer to your school's 2006 AIM Data Service website at <http://aimds.vcaa.vic.edu.au>.

² % student participation = (students who participated in AIM / Feb enrolments) * 100

³ students who participated in AIM at the same school in Years 3 and 5 are called the matched cohort

Teacher Assessment of Student Progress (PSD students)

School no: 954

School name: Talbot Primary School

Explanation: Teachers assess their students' progress against the 8 VELs Domains / CSF KLAs using a 6-point scale (students in special schools and those who cannot be assessed against the VELs / CSF).

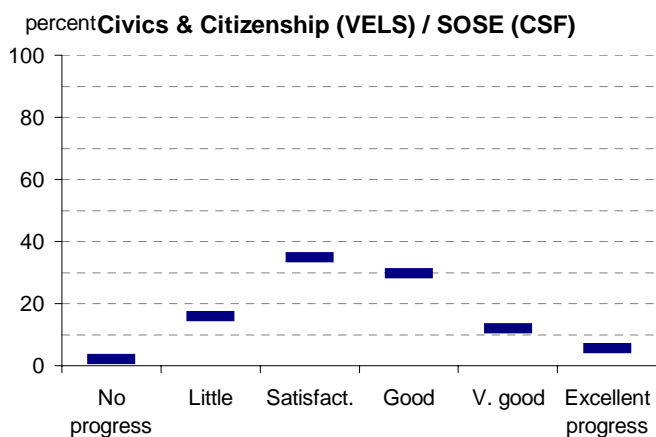
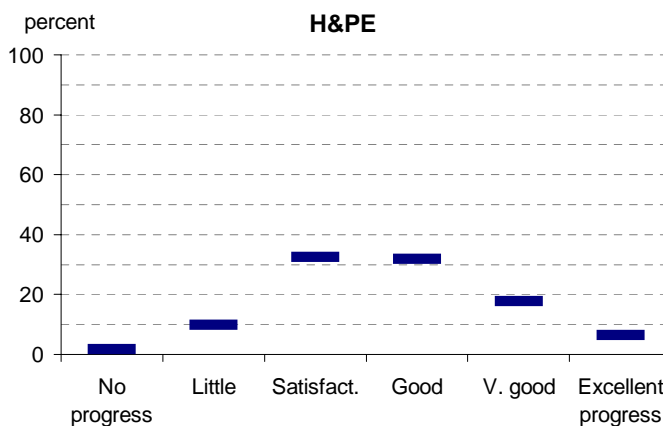
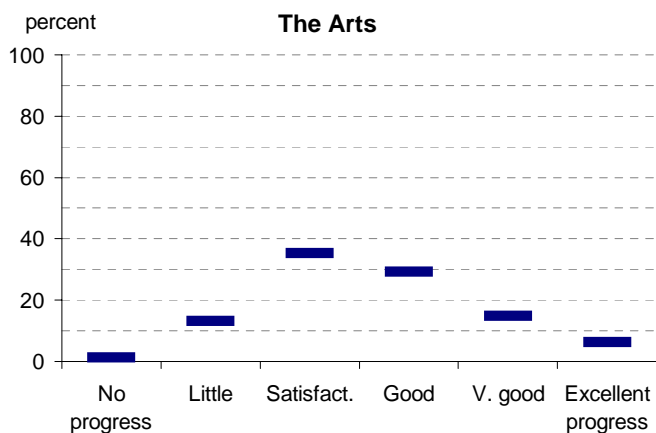
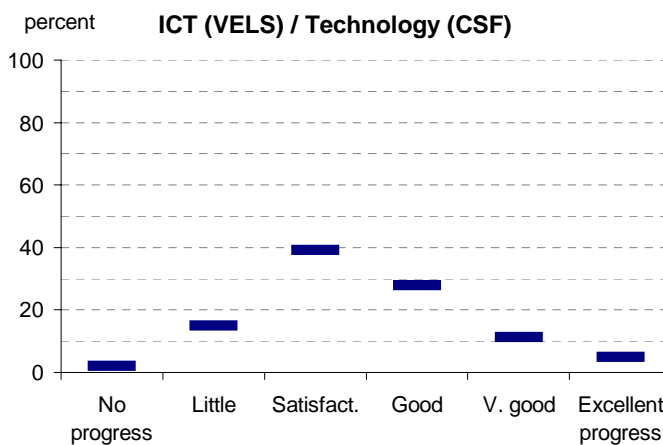
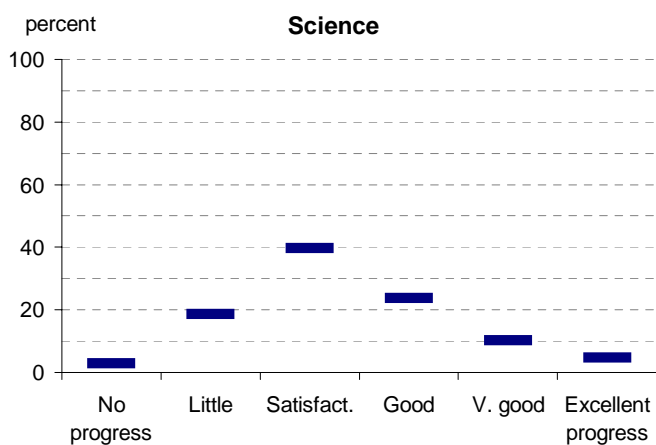
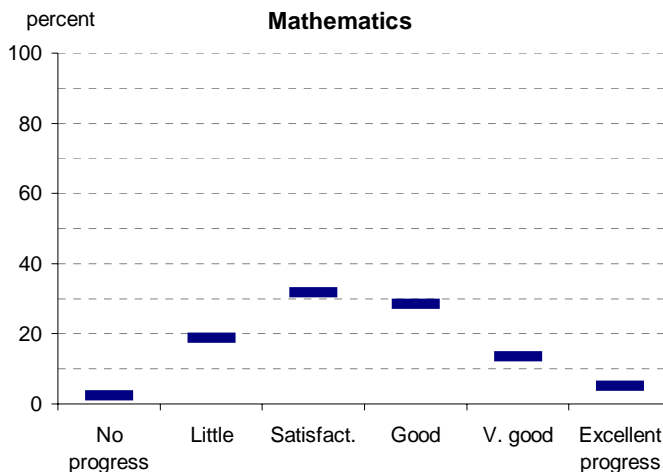
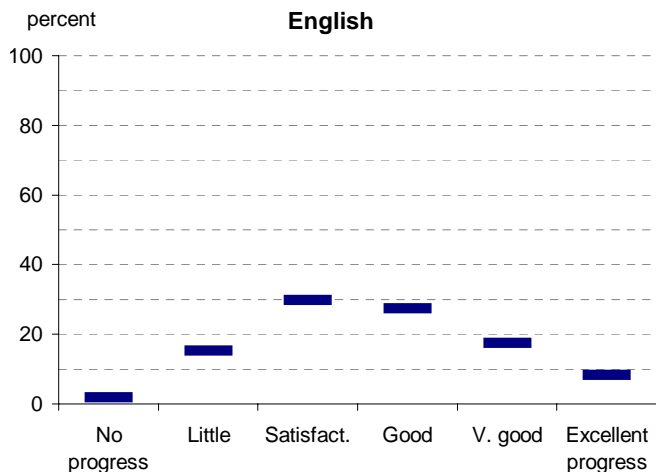
Source of data: Data transmitted from school to DoE via an online web-form.

	No progress (%)	Little progress (%)	Satisfactory progress (%)	Good progress (%)	Very good progress (%)	Excellent progress (%)	Total students assessed ¹ (no.)
2002 (by CSF KLA)							
English							
Mathematics							
Science							
Technology							
The Arts							
H&PE							
SOSE							
2003 (by CSF KLA)							
English							
Mathematics							
Science							
Technology							
The Arts							
H&PE							
SOSE							
2004 (by CSF KLA)							
English							
Mathematics							
Science							
Technology							
The Arts							
H&PE							
SOSE							
2005 (by CSF KLA)							
English							
Mathematics							
Science							
Technology							
The Arts							
H&PE							
SOSE							
2006 (by VELs Domain)							
English							
Mathematics							
Science							
ICT							
The Arts							
H&PE							
Civics & Citizenship							
2005 Primary state benchmarks (by CSF KLA) (2006 benchmarks are not available at this stage)							
English	2	15	30	27	17	8	
Mathematics	2	19	32	29	14	5	
Science	3	19	40	24	10	5	
Technology	2	15	39	28	11	5	
The Arts	1	13	35	29	15	6	
H&PE	2	10	32	32	18	6	
SOSE	2	16	35	30	12	6	

Note: ¹ If schools provided percentages only, it is not possible to report the number of students assessed. In these cases, the total percentage (100) will be shown.

Teacher Assessment of Student Progress (PSD students)

School no: 954
 School name: Talbot Primary School

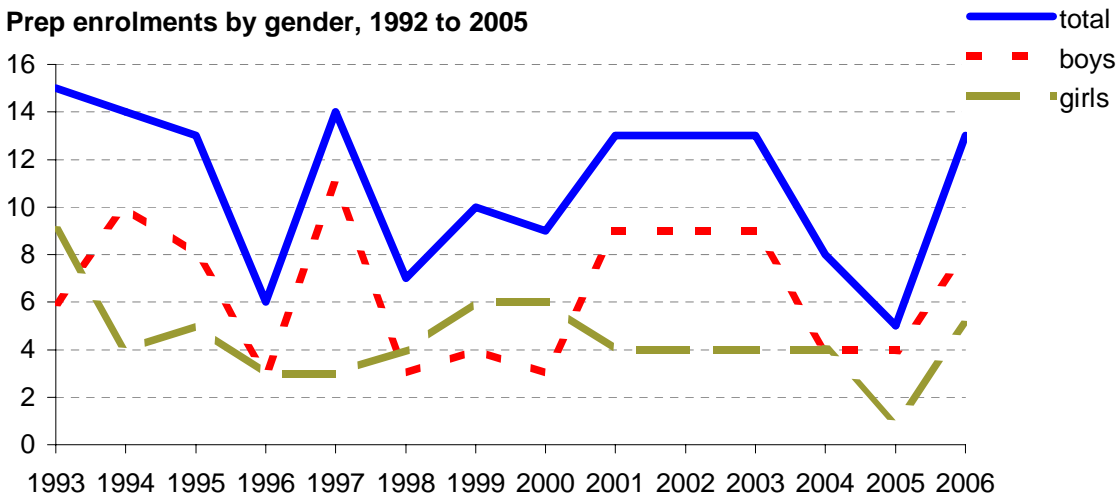
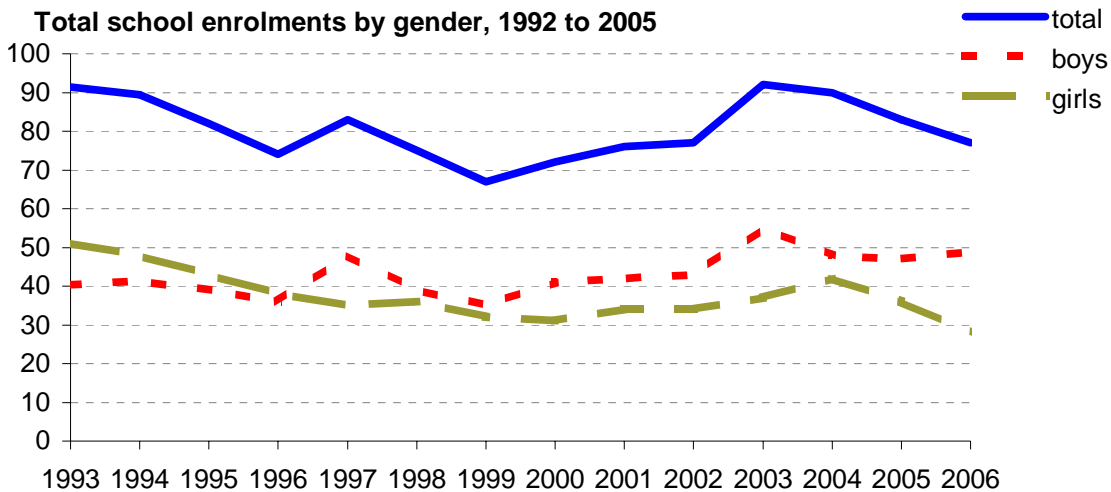


- 2002 (by CSF KLA)
- 2003 (by CSF KLA)
- 2004 (by CSF KLA)
- 2005 (by CSF KLA)
- 2006 (by VELS Domain)

Enrolments

School no: 954
School name: Talbot Primary School
Explanation: Enrolments at February census.
Source of data: February census.

Year	Total school enrolment			Prep enrolment			Year 7 enrolments		
	boys	girls	total	boys	girls	total	boys	girls	total
1993	40	51	91	6	9	15			
1994	41	48	89	10	4	14			
1995	39	43	82	8	5	13			
1996	36	38	74	3	3	6			
1997	48	35	83	11	3	14			
1998	39	36	75	3	4	7			
1999	35	32	67	4	6	10			
2000	41	31	72	3	6	9			
2001	42	34	76	9	4	13			
2002	43	34	77	9	4	13			
2003	55	37	92	9	4	13			
2004	48	42	90	4	4	8			
2005	47	36	83	4	1	5			
2006	49	28	77	8	5	13			



Student Absence

NEW - Student Absence by FTE student

School no: 954

Explanation: The average (mean) number of absent days* per student. Up to 2006, the formula used to calculate the average number of absent days per student was based on student headcount. From 2006, the formula will be based on FTE** students. The new formula will provide a more accurate summary of student absence. For 2006, student absence will be provided for both student headcount and FTE student. Note that 20 absent days equates to 1 absent day per fortnight, and 10 absent days to 1 absent day per month.

School name: Talbot Primary School

Source of data: Data retrieved electronically from CASES21 at time of rollover.

Student Absence (by student headcount)

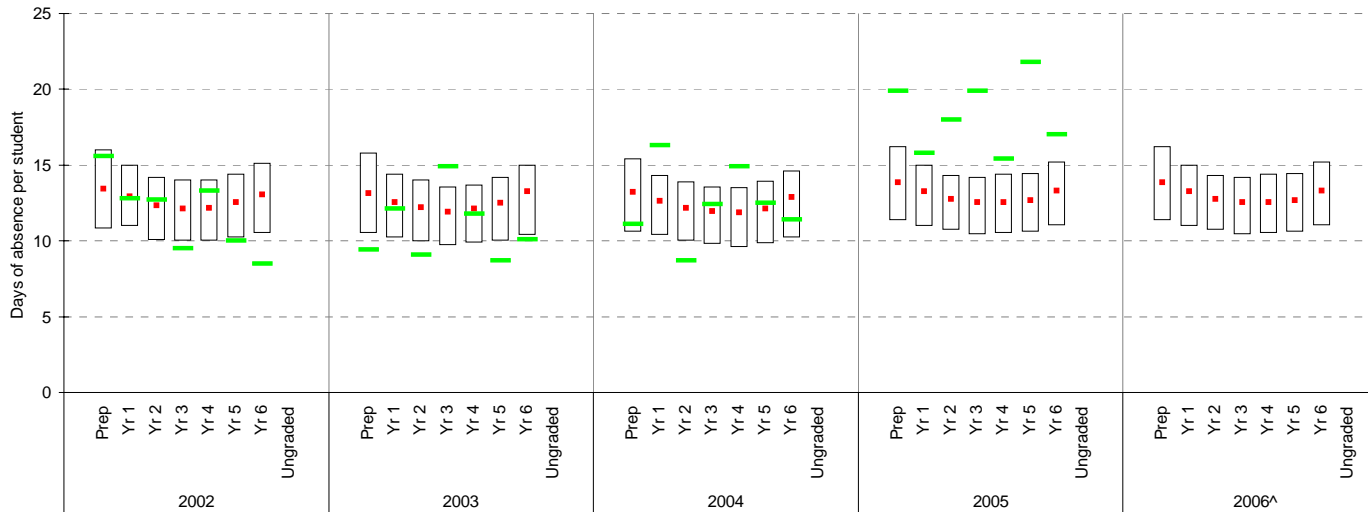
	School										2005 state benchmark^		
	2002		2003		2004		2005		2006		25th ptile	Mean	75th ptile
	Enrolments	Avg absent days / student	Enrolments	Avg absent days / student	Enrolments	Avg absent days / student	Enrolments	Avg absent days / student	Enrolments	Avg absent days / student			
Prep	13	15.6	18	9.4	9	11.1	5	19.9			11.4	13.9	16.2
Yr 1	13	12.8	16	12.1	17	16.3	8	15.8			11	13.3	15
Yr 2	10	12.7	19	9.1	16	8.7	18	18			10.7	12.8	14.3
Yr 3	11	9.5	12	14.9	17	12.4	14	19.9			10.5	12.6	14.2
Yr 4	8	13.3	15	11.8	10	14.9	16	15.4			10.5	12.6	14.4
Yr 5	14	10	11	8.7	14	12.5	11	21.8			10.6	12.7	14.4
Yr 6	8	8.5	18	10.1	10	11.4	14	17			11	13.3	15.2
Ungraded													
P-6 mean		11.9		10.7		12.5		18.1				13	

Student Absence (by FTE** student)

	School 2006		2006 state benchmark^^		
	Enrolments	Avg absent days / FTE** student	25th ptile	Mean	75th ptile
Prep	11.9	15.2			
Yr 1	5.0	20.4			
Yr 2	8.4	9.3			
Yr 3	16.4	14.1			
Yr 4	11.8	14.9			
Yr 5	14.5	11.2			
Yr 6	8.3	15.9			
Ungraded					
P-6 mean		13.9			

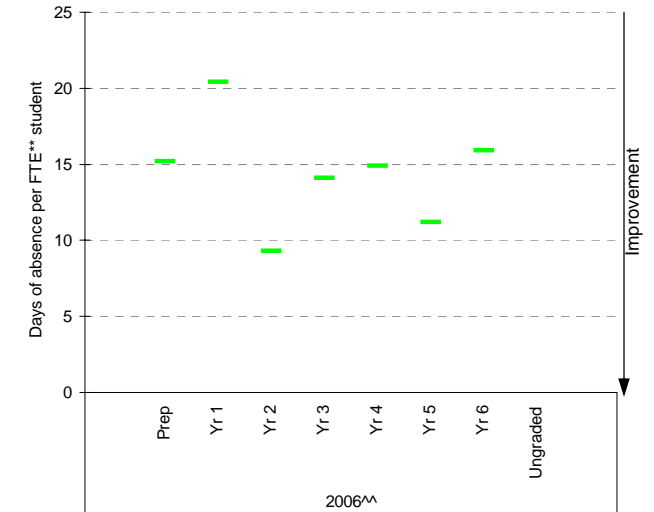
Legend:
 State 75th percentile
■ State mean
 School
 State 25th percentile

Student absence (by student headcount), school plotted against state benchmarks^, 2002 to 2006



Notes: * Includes curriculum absences only (absence codes 200, 201, 202, 203, 205, 206, 207, 208, 209, 210, 211, 300, 401, 500, 700, 800, 804, 805, 900).
 ^ 2006 benchmarks are not available at this stage. In the meantime, 2005 benchmarks are shown.

Student absence (by FTE** student), school plotted against state benchmarks^^, 2006



Notes: ** FTE = Full Time Equivalent (including part-time and part-year fractions).
 ^^ 2006 benchmarks are not available at this stage.

Parent Opinion

School no: 954

School name: Talbot Primary School

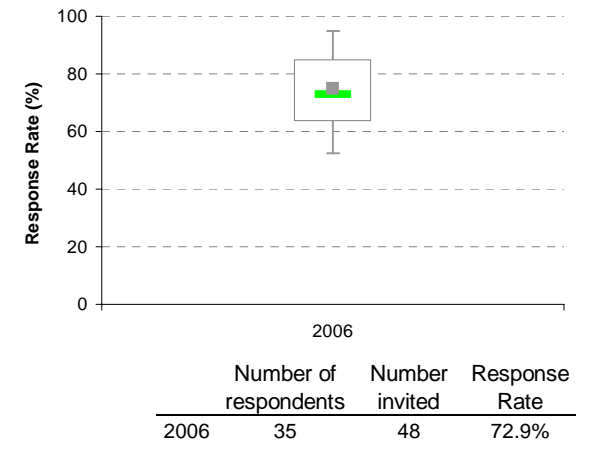
Explanation: A self-completion questionnaire to obtain parents' opinions of the school. Parents rated a number of statements using a scale where 1=strongly disagree & 7=strongly agree. The statements were grouped into the following categories.

Source of data: Data scanned from questionnaires completed by parents.

Variable	Year	School mean	State Primary median
School Improvement	2006	5.58	5.71
Approachability	2006	5.83	5.81
Teacher Morale	2006	5.90	5.82
Parent Input	2006	5.20	5.59
Stimulating Learning	2006	5.86	5.81
Behaviour Management	2006	5.19	5.51
Reporting	2006	5.75	5.45
Learning Focus	2006	5.89	5.71
Transitions	2006	5.78	5.72

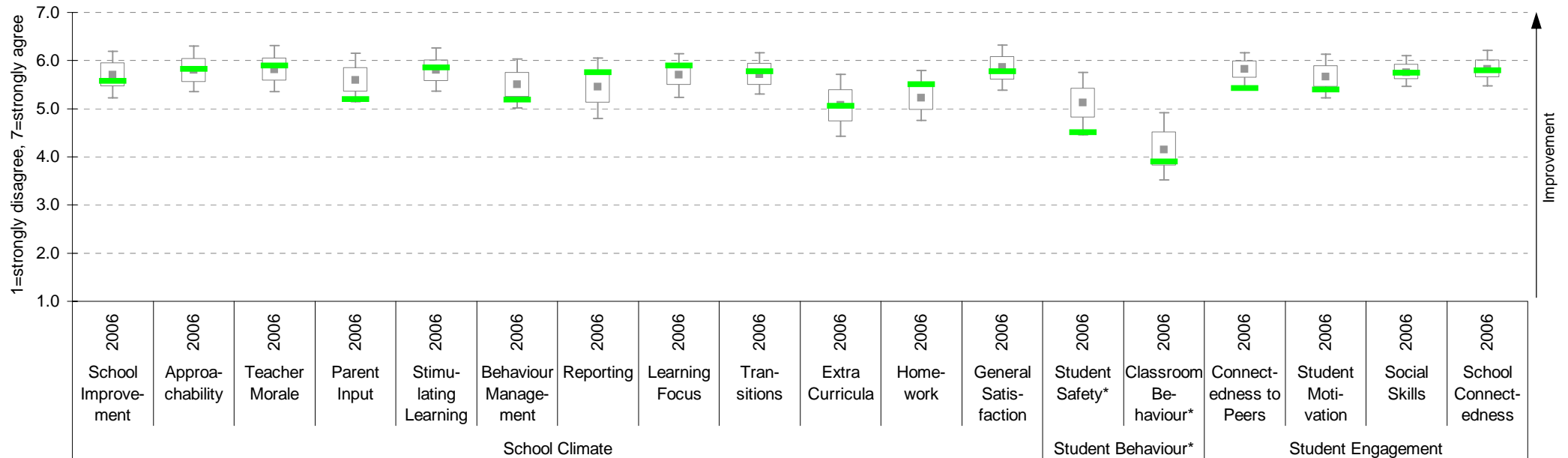
Variable	Year	School mean	State Primary median
Extra Curricula	2006	5.06	5.07
Homework	2006	5.51	5.23
General Satisfaction	2006	5.77	5.87
Student Safety*	2006	4.50	5.13
Classroom Behaviour*	2006	3.90	4.15
Connectedness to Peers	2006	5.43	5.83
Student Motivation	2006	5.39	5.66
Social Skills	2006	5.74	5.76
School Connectedness	2006	5.80	5.83

School response rate against Primary school distribution



Legend:
 State 90th percentile
 State 75th percentile
 State Median
 State 25th percentile
 School
 State 10th percentile

Parent Opinion, school plotted on state Primary benchmarks 2006



Notes: ^ Benchmarks available for Primary, Secondary, Pri/Sec, Special and SDS schools.

* Parents' responses to all negatively phrased questions have been reversed for reporting purposes. Across all variables, the higher the score or percentile rank, the more positive parents' perceptions.

Staff Opinion

School no: 954

School name: Talbot Primary School

Explanation: A self-completion questionnaire to obtain the staff's opinions of the school. The survey was administered online using the School Organisational Health Questionnaire.

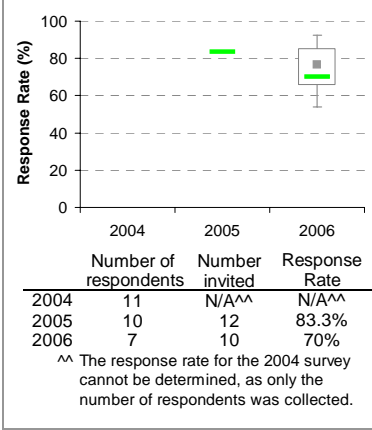
Source of data: Data transmitted from school staff to DoE via an online survey application.

Variable			School mean	State Primary median
No.	Name	Year		
1	Individual Morale	2004	83.6	73.7
		2005	86.3	75.5
		2006	77.6	75.6
2	School Morale	2004	90.0	76.1
		2005	91.0	77.6
		2006	80.0	78.1
3	Supportive Leadership	2004	88.6	78.6
		2005	84.5	80.0
		2006	83.6	80.0
4	Role Clarity	2004	90.9	78.3
		2005	86.3	79.2
		2006	78.6	79.6
5	Professional Interaction	2004	90.9	79.3
		2005	89.3	80.5
		2006	83.2	80.7
6	Participative Decision-Making	2004	84.1	73.2
		2005	81.9	74.8
		2006	75.0	75.1
7	Goal Congruence	2004	91.8	80.0
		2005	92.0	81.4
		2006	90.0	81.7

Variable			School mean	State Primary median
No.	Name	Year		
8	Appraisal & Recognition	2004	75.4	69.8
		2005	62.9	70.5
		2006	60.1	71.6
9	Professional Growth	2004	78.2	72.3
		2005	69.5	73.8
		2006	72.1	74.2
10	Curriculum Coordination	2004	81.3	74.5
		2005	77.7	74.6
		2006	75.0	75.0
11	Effective Discipline Policy	2004	95.5	77.6
		2005	92.0	79.7
		2006	91.3	79.9
12	Student Orientation	2004	88.1	85.0
		2005	88.1	85.9
		2006	88.3	86.1
13	Student Motivation	2004	72.1	75.0
		2005	75.0	75.9
		2006	78.0	76.8
14	Student Decision-Making	2004	52.9	66.2
		2005	55.7	68.4
		2006	57.0	69.4

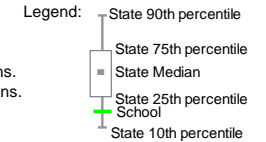
Variable			School mean	State Primary median
No.	Name	Year		
15	Learning Environment	2004	83.0	78.6
		2005	80.4	80.3
		2006	78.8	81.3
16	Student Misbehaviour	2004	26.2	26.0
		2005	20.2	22.9
		2006	21.7	21.7
17	Classroom Misbehaviour	2004	9.2	15.0
		2005	7.5	14.6
		2006	10.0	13.8
18	Excessive Work Demands	2004	26.1	42.4
		2005	34.4	42.8
		2006	33.0	42.9
19	Individual Distress	2004	10.9	23.0
		2005	9.3	22.2
		2006	19.0	21.6
20	School Distress	2004	13.6	29.9
		2005	14.0	29.2
		2006	25.7	28.8

School response rate* against Primary school distribution

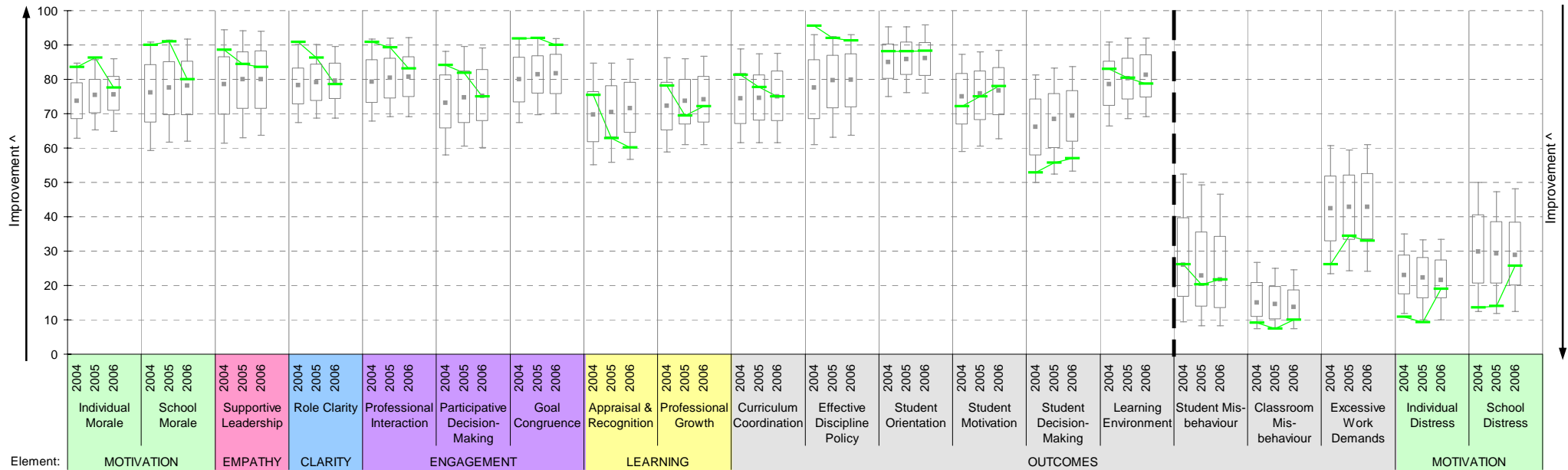


Notes:

- * If there were 6 or less respondents, table data is not shown for confidentiality reasons.
- ^ If there were 3 or less respondents, graph data is not shown for confidentiality reasons.
- ^ The higher the school mean, the more positive the outcome for variables 1 to 15.
- The lower the school mean, the more positive the outcome for variables 16 to 20.



Staff Opinion, school plotted on state Primary benchmarks 2004 to 2006



Staff Sick Leave

School no: 954

School name: Talbot Primary School

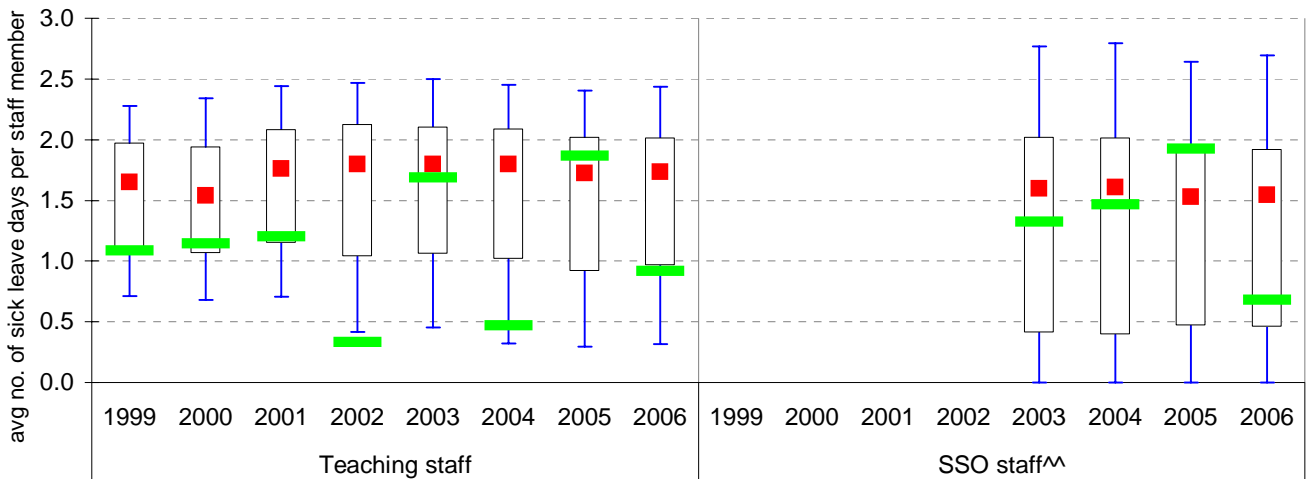
Explanation: The number of non-certificated and total sick leave days taken per staff member. A detailed explanation on how staff sick leave is calculated is provided in the Annual Reports Frequently Asked Questions page of the Standards website (<http://www.sofweb.vic.edu.au/standards/account/arepq.htm>).

Source of data: Human Resources Management System (HRMS)^.

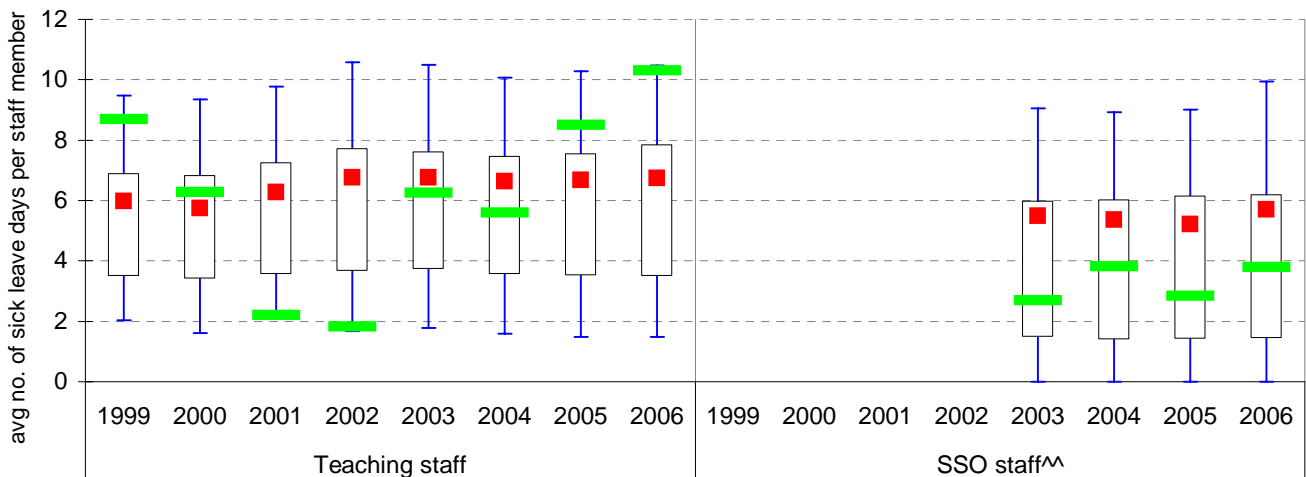
Staff Type	Non-Certificated sick leave days per staff member^								2006 bmark mean
	1999	2000	2001	2002	2003	2004	2005	2006	
Teacher	1.09	1.14	1.20	0.33	1.68	0.47	1.87	0.92	1.73
SSO^^					1.33	1.47	1.92	0.68	1.54

Staff Type	Total sick leave days per staff member^								2006 bmark mean
	1999	2000	2001	2002	2003	2004	2005	2006	
Teacher	8.70	6.29	2.20	1.83	6.26	5.59	8.50	10.31	6.73
SSO^^					2.69	3.81	2.85	3.80	5.71

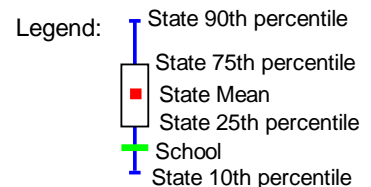
NON-CERTIFICATED sick leave, 1999 to 2006



TOTAL sick leave, 1999 to 2006



Note: ^ There may be some discrepancy between the results from CASES & those from HRMS. The latter are considered to be more accurate.
^^ Data for SSO (School Services Officer) staff is only available from 2003.



Teaching Staff Retention

School no: 954

School name: Talbot Primary School

Explanation: The retention rate of teaching staff is determined by matching staff payroll records for the last pay in June of one year (Year A), to the last pay in June of the following year (Year B).

Source of data: Human Resources Management System (HRMS).

Teaching Staff*

Year A	Year B	Number of Teaching Staff in Year A	Number of Teaching Staff retained in Year B	Teaching Staff Retention Rate	Statewide Average
2005	2006	8	6	75%	87%

Of the 8 teaching service staff at Talbot Primary School at June 2005 (including those on leave without pay), 6 or 75% were still at the school at June 2006. This figure across all Government schools was 87%.

Ongoing Teaching Staff*^

Year A	Year B	Number of Ongoing Teaching Staff in Year A	Number of Ongoing Teaching Staff retained in Year B	Ongoing Teaching Staff Retention Rate	Statewide Average
2005	2006	6	6	100%	91%

Of the 6 ongoing teaching service staff at Talbot Primary School at June 2005 (including those on leave without pay), 6 or 100% were still at the school at June 2006. This figure across all Government schools was 91%.

Note: * Teaching staff includes Principal class, Teacher class and Instructor class. Teaching staff employed as visiting teachers, guidance officers, curriculum consultants, etc. are excluded as they are not charged to a particular school.

^ Not including fixed term staff, except for where staff had changed from ongoing in Year A to fixed term in Year B.

Bank Balances

School no: 954

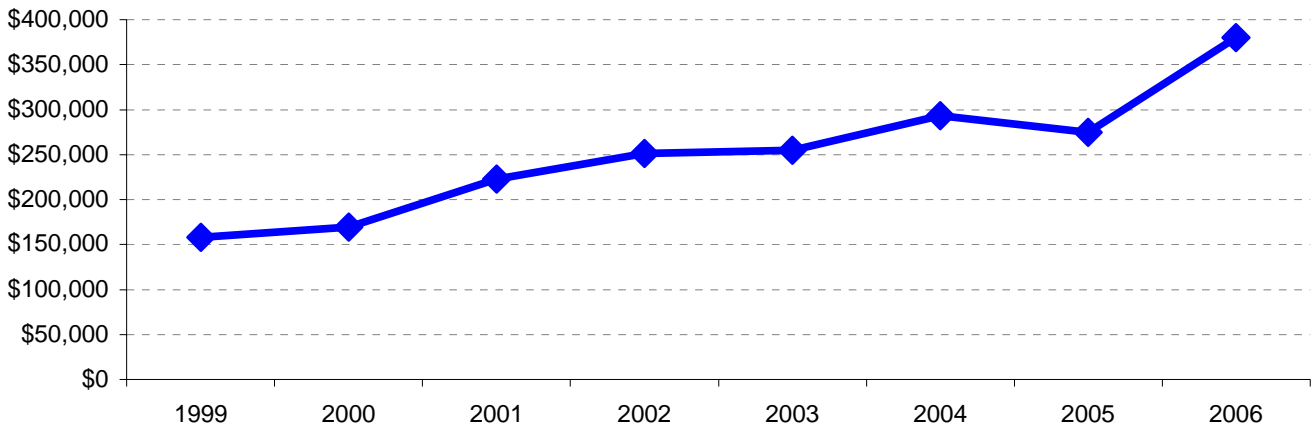
School name: Talbot Primary School

Explanation: Account balance figures include official and investment accounts, and are calculated by taking the opening balance at 1st January plus the total receipts at 31st December less total payments at 31st December.

Account Balances (Official plus Investment Accounts)

1999	\$157,789	2003	\$254,599
2000	\$169,321	2004	\$293,061
2001	\$222,539	2005	\$274,599
2002	\$251,340	2006	\$380,280

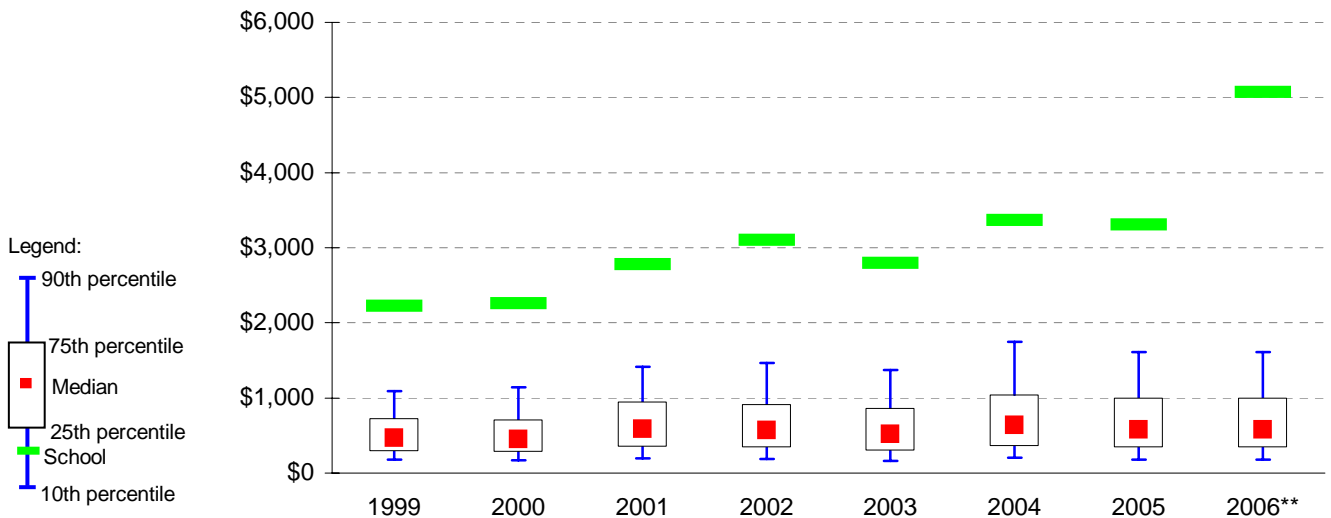
Account Balances, 1999 to 2006



Account Balances (Official plus Investment Accounts) per student^

1999	\$2,222	2003	\$2,798
2000	\$2,258	2004	\$3,369
2001	\$2,782	2005	\$3,308
2002	\$3,103	2006	\$5,070

School account balances per student enrolled in August census plotted on state Primary benchmarks*, 1999 to 2006



Notes:

^ The account balance per student has been calculated to enable some comparison to be made between schools.

* Benchmarks for primary, secondary, pri/sec, SDS, special and language schools.

** 2006 benchmarks are not available at this stage. In the meantime, 2005 benchmarks are shown.